



Placer Repertory Theater

Performing arts, cultural & economic enrichment for Placer County

FOR IMMEDIATE RELEASE

Contact: Kevin Foster
PRT phone: 916-884-0055
Kevin Cell: 916-342-4381

July 13, 2021

Placer Repertory Theater: Outreach@placerrep.org | PlacerRep.org

Local History Comes Alive in New Play from Placer Rep

New Beginnings: a new work about the historic Placer County Roundhouses is a love-letter to Placer County history, produced by Placer Repertory Theater at William Jessup University on July 31st, 2021. This event features a new play about the historic R, live music from the instructors' band at Rockstar Music Academy, and outreach tables hosted by Rocklin and Roseville Historical Societies, with tickets offered via Eventbrite.com. Placer Repertory Theater commissioned this play by Rocklin local Ryan Gerberding, a graduate of the Placer Repertory Theater mentorship program. The actors perform a variety of characters from a script rich with local historical references, to bring this lively, comedic, romantic, yet poignant testament to human and community resilience to life. Audiences are invited to provide feedback, and to NAME THAT PLAY.

The Rocklin Roundhouse was an economic engine and cultural touchstone for the surrounding town for over forty years, until all that changed. Based on true events, this play follows Mast Mechanic L.L. Timmins and the citizens of Rocklin as they deal with the removal of their town's beloved roundhouse and the construction of the new roundhouse in Roseville. Taking place from 1905 to 1908, this story chronicles the town's struggle to maintain its community in the face of the never-ending march of progress.

"This is truly a community coming together to share its history. The Rocklin Historical Society, the Roseville Historical Society and Southern Pacific Railroad History Center's president Scott Inman were all extremely helpful with the research that allowed us to bring this story to life," said director/dramaturg T.S. Forsyth.

At the Rocklin and Roseville Historical Society outreach tables, attendees of both the 4 p.m. and 7 p.m. showings are encouraged to learn more about these organizations, their missions and programs. Audiences are also invited to a post-show Q&A where they may ask questions of the performers and director, share local family history and



Placer Repertory Theater

Performing arts, cultural & economic enrichment for Placer County

help to NAME THAT PLAY. ***Purchasing tickets in advance is highly recommended, as seats are limited due to social distancing.*** Tickets may be purchased on Eventbrite.com at the following link: <https://www.eventbrite.com/e/new-beginnings-a-new-work-about-the-historic-placer-county-roundhouses-tickets-161593782353>.

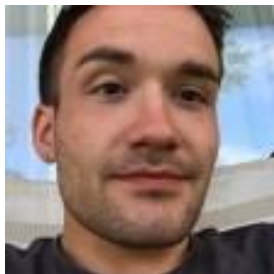
Placer Repertory Theater (www.PlacerRep.org) is a 501(c)3 nonprofit professional performing arts and culture nonprofit organization with the mission to offer educational and quality-of-life enriching professional performing arts and cultural programs relevant to the people of Placer County, while supporting local organizations and acting as an economic engine for the area. Follow Placer Repertory Theater on Facebook and Instagram: @PlacerRep. Rocklin Historical Society may be found at RocklinHistorical.org, and Roseville Historical Society may be found at RosevilleHistorical.org. SPLives.org is the website for the Southern Pacific Railroad History Center, and Rockstar Music Academy's website is TheRockstarMusicAcademy.com.

Contact Kevin Foster, Outreach Director, at Outreach@PlacerRep.org, or Teresa Stirling Forsyth, Producing Artistic Director, at ArtisticDirector@PlacerRep.org.



ANTHONY PERSON (Track 1)

Anthony is “wayyyy juiced” to be joining Placer Repertory Theater for his first adventure with the company. He has been extremely blessed to portray many outstanding characters in the Sacramento area during the last 15 years, such as Scapino in *Scapino* at Sacramento City Theatre, Tommy in *Tommy J & Sally* at Celebration Arts, Feste the Fool in Sacramento Shakespeare Festival's *Twelfth Night*, Lysander in Sacramento Theatre Company's *A Midsummer Night's Dream* & Paul in *Six Degrees of Separation* at Falcon's Eye Theatre. Anthony also performed in *A Few Good Men*, *Something Wicked This Way Comes*, and *Woody Guthrie's An American Song* with City Theatre.



KEVIN FOSTER (Track 2)

Kevin Foster is an area local excited to work at Placer Repertory as Outreach Director and in various other capacities. He began training in acting at UC Davis while earning his B.A. in Music Performance. After graduating, he performed at Davis Musical Theater Company in *Peter Pan*, *The King and I*, *Damn Yankees*, and the Elly Award winning production of *Chicago*. His other credits include *The Importance of Being Earnest* at Chautauqua Playhouse and *A Funny Thing Happened on the Way to the Forum* at Sacramento Theater company, where he has taught youth performing arts classes. He currently teaches for Rockstar Music Academy in Lincoln. Kevin also may be seen



Placer Repertory Theater

Performing arts, cultural & economic enrichment for Placer County

in Placer Rep's digital short series *Sherlock Holmes: Domestic Mysteries* on YouTube and Facebook.



ERIC PIOTROWSKI (Track 3)

Eric Piotrowski is an actor and Bass-Baritone with the Sacramento Philharmonic and Opera, where he has performed in *Rigoletto*, *Tosca*, and as a Chorus Member. He has appeared in TV and film, and his other theatre credits include *Sweeney Todd* with Sacramento City College and *The Rose Gala* with Roseville Theatre Arts Academy. Eric frequently performs with Green Valley Theater Company, and was seen in "A Jane Austen Holiday," the December 2020 Placer Repertory Theater live digital stage reading of the new adaptation *Persuasion*. Currently you may see

Eric in Placer Rep's digital short series *Sherlock Holmes: Domestic Mysteries* on YouTube and Facebook as "Burke" the Baker Street Irregular in episode 3, and as Sherlock's brother Mycroft Holmes in episode 6.



TADJA ENOS (Track 4)

Raised in Grass Valley, CA, Tadjia lives in Auburn, CA. She attended Ghidotti Early College High School and performed in Nevada County community theatre. She then went to UC Santa Barbara, where she earned a BFA in Acting. A few of her favorite roles were Hamlet, Catherine in *A View From the Bridge*, and Goneril in *King Lear*. She trained for a summer with Prague Shakespeare Company, where she performed Cassius in *Julius Caesar*. She also has a background in dance, devised movement, and crocheting. She received a Santa Barbara Indy Award for her performance as *Hamlet*. This will be her first opportunity to work with Placer Repertory, and she's excited to re-enter the theatre

scene. She plays several characters as a member of the ensemble cast for *New Beginnings*.



JODI SERRANO (Track 5, Understudy Track 4)

An Actor, singer, VO artist, private coach, as well as Music Teacher and Director at various public and private schools, Jodi Serrano holds a B.A. in Choral Performance from CSU Northridge and an M.A. in Education from Brandman University. She received the Chelsey Award for Best Supporting Actress at Woodland Opera House and a Lifetime Membership with the International Thespian Society. Her credits include *Beauty and The Beast* at Woodland Opera House, *Flowers for Algernon*, and her performances as Mary Magdalene with *Best of Broadway*, and Vocalist for the Camellia Symphony Orchestra of Sacramento.



Placer Repertory Theater

Performing arts, cultural & economic enrichment for Placer County



SPENCER T GAYDEN (Track 6, Understudy Track 3)

Spencer T Gayden moved to Placer County at the age of seven, where he discovered his love of theatre while attending Horizon Charter School. For five years, Spencer has been an instructor and director with Royal Stage Christian Performing Arts; he also manages social and digital media for local education non-profit IntelliBricks and has worked for the character company Sevilla Magic FX. Recently, audiences saw Spencer in an original musical with Curious Theatre Works, a small local experimental theatre group. While at William Jessup University, he enjoyed performing roles such as Howard Bevans in *Picnic*, Professor Plum in *Clue*, and Ben

Gunn in *Treasure Island*. Upon graduation with his BA in Theatre in May 2021, Spencer joined the Mentorship program at Placer Repertory Theater, and as of June 1, became a company member appointed to the position of Digital & Social Media Director. His first major role with PRT is as a member of the ensemble cast for *New Beginnings*.



MARLEY BAUER (Silent Bob, Understudy Tracks 1,2,5,6)

Marley Bauer is Rocklin born and raised. Currently, he lives with his parents following an earth-shattering plague, as he awaits his final semester at CSU Long Beach, where he majors in Theatre with an emphasis in performance, and minors in Journalism. Marley is “known” for his work at Sierra College in the Theatre department production of *The Addams Family*, which happens to be his favorite production experience to-date. Marley also has experience with several community theatres in the Placer and Sacramento areas, including Green Valley Theatre. In his spare time, he enjoys reading and writing (if he can drum up the attention span for either). *New Beginnings* is Marley’s second production with

Placer Repertory Theater, his first performance being the client, Mr. Chiltern, in *Sherlock Holmes: Domestic Mysteries*, episode 2, currently available for streaming on YouTube and Facebook.

THE EVENT

WHO:

Placer Repertory Theater - <https://PlacerRep.org>

WHAT: An event:

New Beginnings: A New Work about the Historic Placer County Roundhouses
(Audiences are invited to NAME THAT PLAY!)



Placer Repertory Theater

Performing arts, cultural & economic enrichment for Placer County

WHERE:

William Jessup University, Bernardoni Hall
2121 University Ave, Rocklin, CA 95765

WHEN:

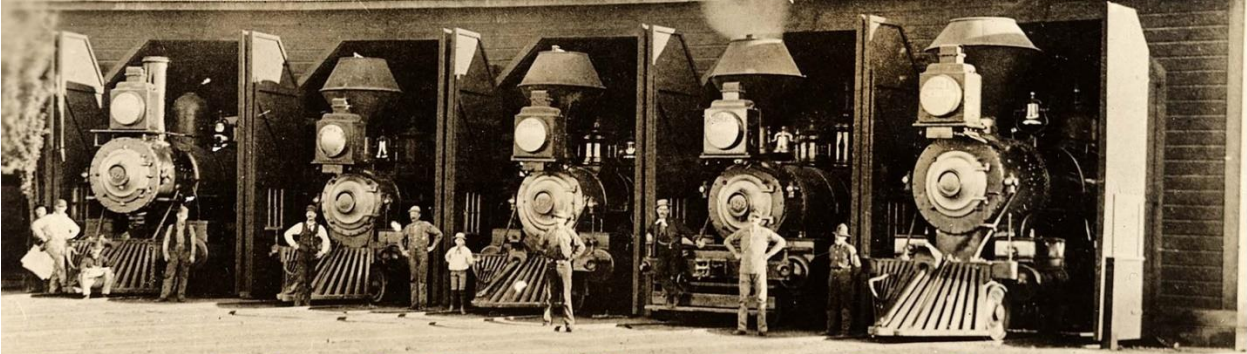
Two showings: Saturday, July 31st @ 4PM & 7PM

TICKETS:

Available as of JULY 1st via [Eventbrite.com](https://www.eventbrite.com), \$10 per person

Tickets in advance highly encouraged due to limited seating.

<https://www.eventbrite.com/e/new-beginnings-a-new-work-about-the-historic-placer-county-roundhouses-tickets-161593782353>



**Placer
Repertory
Theater**

NEW BEGINNINGS
July 31 @ Wm Jessup Univ, 4 p.m. & 7 p.m.
FMI: [EventBrite.com](https://www.eventbrite.com)

A new work about the Historic Placer County Roundhouses.
With a post-show Q&A; Audiences are invited to NAME THAT PLAY!

SPONSORED BY ARMROD CHARITABLE FOUNDATION

####